

THE LINDFIELD COLLECTION

CARMINE

GLADSTONE PARADE • LINDFIELD

LINDFIELD.TRUSLAN.COM.AU





ARTIST IMPRESSION - GLADSTONE PARADE

INTRODUCING CARMINE

With its green lawns, classic homes and rich heritage, the North Shore is one of Sydney's most sought-after enclaves. Truslan is delighted to bring their signature style to this beautiful community, with an exciting new collection of luxury town homes.

Situated on Gladstone Parade, Lindfield, Carmine is a thoughtfully designed development, comprising just eighteen spacious town homes. Set among landscaped gardens, it's the perfect base from which to enjoy everything this area has to offer.

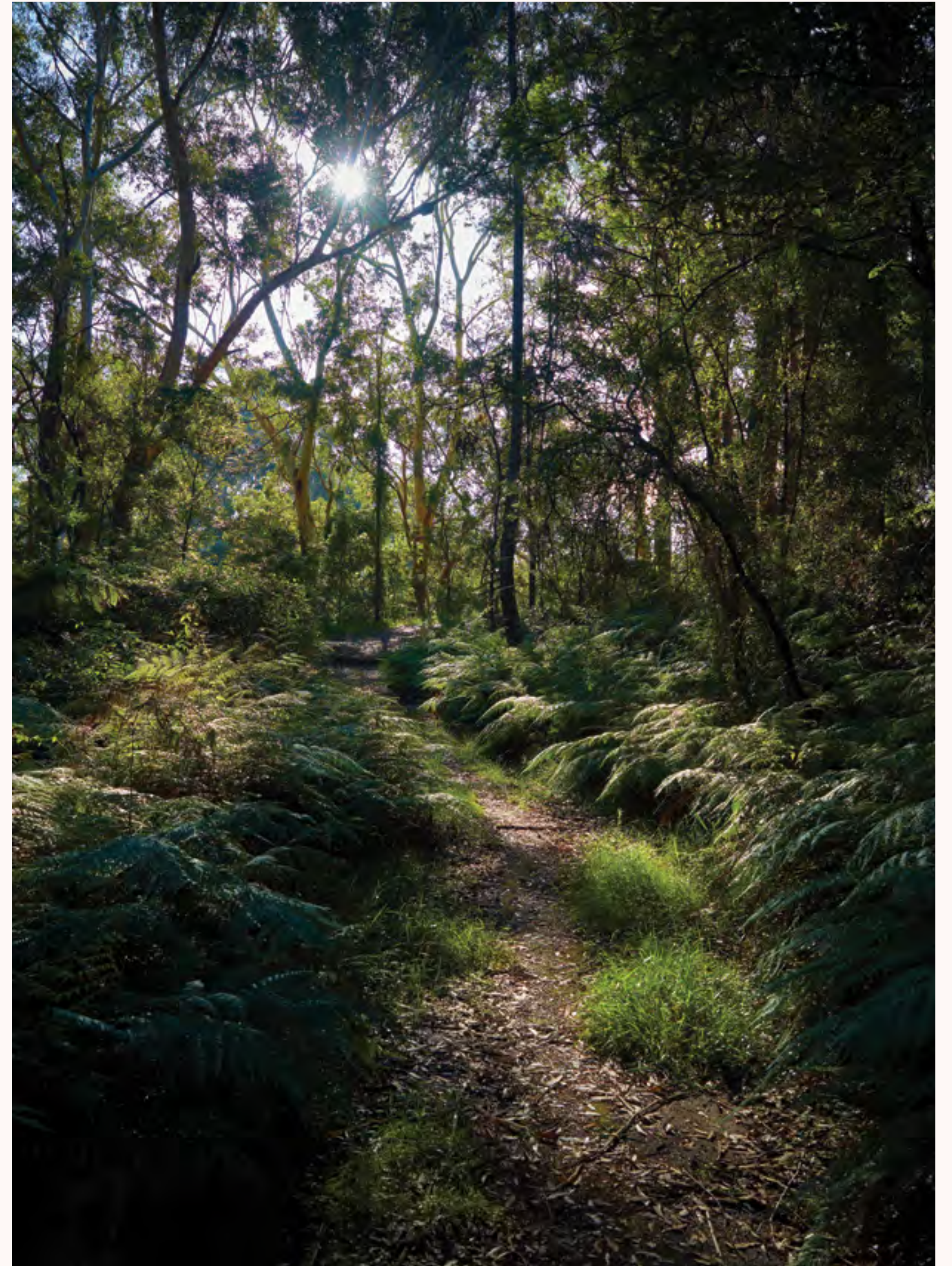


The contents of this brochure was produced prior to completion of construction. Photographs and artists impressions depicting interiors and exteriors are meant as a guide only. The information provided herein is believed to be correct but is not guaranteed. Images of the residences are indicative only and subject to change. Truslan and its appointed agents disclaim all liability should any information or matter contained herein differ from the contract of sale or the actual constructed development.



STUNNING IN ALL SEASONS

Gladstone Parade is one of Lindfield's premier streets. Quiet and tranquil, it's beautifully located just moments from schools, shops and transport - giving residents the ideal balance of peace and convenience. Lined with stunning deciduous trees, the street changes colour with the seasons, from summer's vibrant greens, to the russet and amber hues of autumn. Whatever time of year, it's a pleasure to behold.





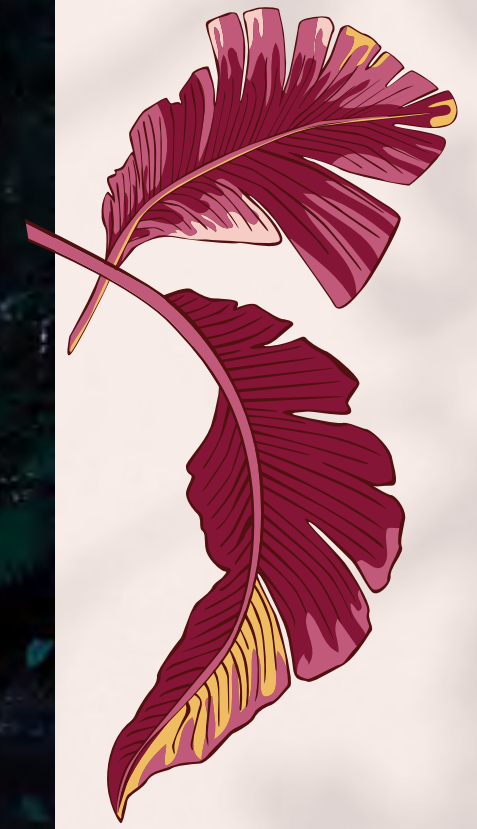
ARTIST IMPRESSION - REAR VIEW



AN ENRICHING LIFESTYLE, ENCIRCLED BY NATURE

Nestled amid pristine pockets of nature, Lindfield is within arm's reach of countless parks, sporting grounds and nature reserves - including the spectacular Lane Cove National Park. Set on either side of the Lane Cove River, this bushland reserve is made for outdoor exploration. From bushwalking and cycling to canoeing, camping and climbing, there are endless activities on offer, providing easy connection to the great outdoors. For Lindfield locals, it really is the ultimate backyard.





“We moved to Lindfield so our kids could grow up close to nature. We love being able to go for long bush walks in Lane Cove National Park. Although we live close to the station (with excellent transport into the city), it really feels like we’re a million miles away. The schools in this area are fantastic too.”

**LAURA, HR MANAGER
AND MUM OF TWO**



CLOCKWISE FROM LEFT:
PATRONS DINING AT GOODFIELDS
EATERY, LINDFIELD
CHILDREN AND FAMILIES
ENJOYING THE CYCLEWAYS IN
LANE COVE NATIONAL PARK
NATURAL BEAUTY SURROUNDING
LINDFIELD SUBURBIA





ARTIST IMPRESSION - LIVING SPACE



ARTIST IMPRESSION -
KITCHEN, LUMIÈRE SCHEME



ARTIST IMPRESSION -
KITCHEN, CHARBON SCHEME



ARTIST IMPRESSION -
BATHROOM, LUMIÈRE SCHEME



ARTIST IMPRESSION -
BATHROOM, CHARBON SCHEME

WHERE STYLE COMES NATURALLY



Designed by award-winning architects and interior designers, Carmine reflects a deep commitment to quality and craftsmanship. Every facet of every home has been carefully considered, from the secluded balconies to the flowing, open-plan living areas. Natural materials and muted colours have been used throughout, creating a sense of understated elegance and a harmonious connection to the surrounding streetscape.

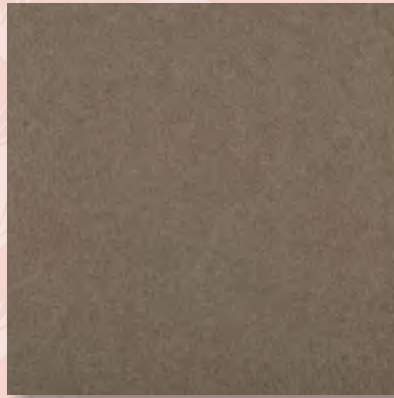


ARTIST IMPRESSION -
BEDROOM AND WARDROBE

LUMIÈRE SCHEME



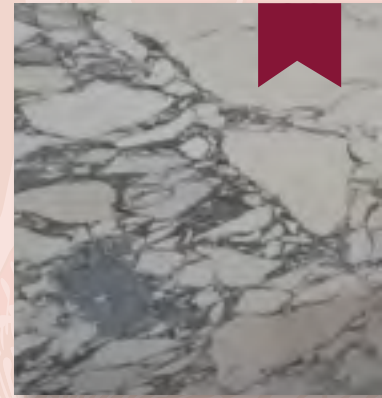
CAESARSTONE BENCHTOP



BEDROOM CARPET

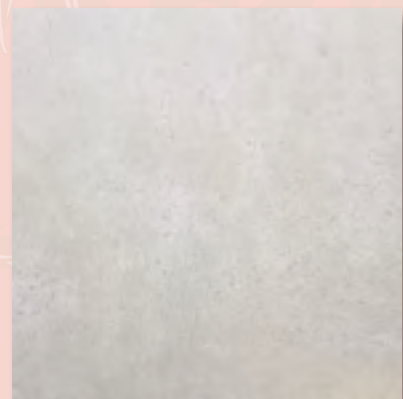


JOINERY - TIMBER VENEER

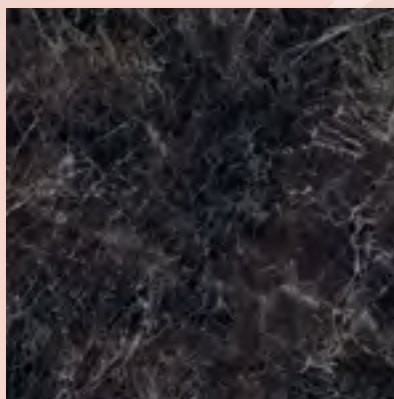


MARBLE BENCHTOP - **UPGRADE**

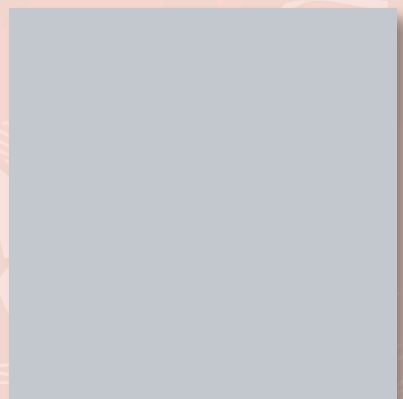
STANDARD INCLUSIONS



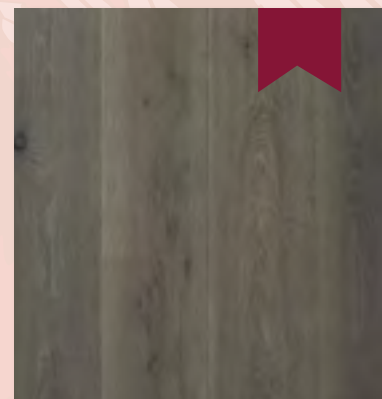
LIVING FLOOR TILE



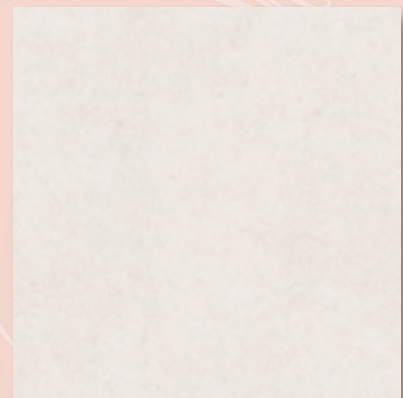
SPLASHBACK TILE



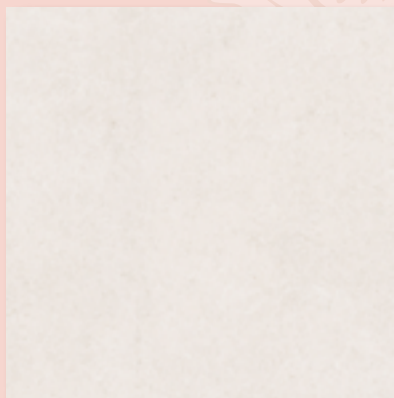
KITCHEN JOINERY DULUX CASHMERE SEMI GLOSS



TIMBER FLOOR - **UPGRADE**



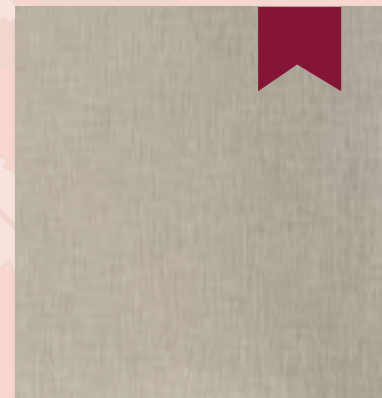
BATHROOM FLOOR TILE



BATHROOM WALL TILE



BATHROOM FEATURE WALL TILE



WALLPAPER - **UPGRADE**

CHARBON SCHEME



CAESARSTONE BENCHTOP



BEDROOM CARPET

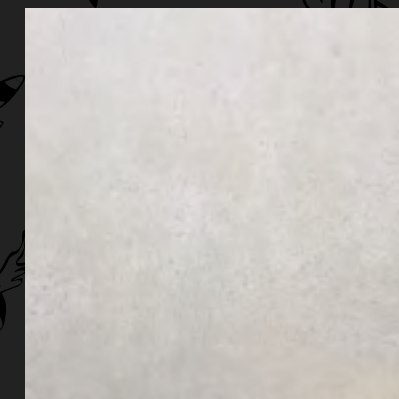


JOINERY - TIMBER VENEER

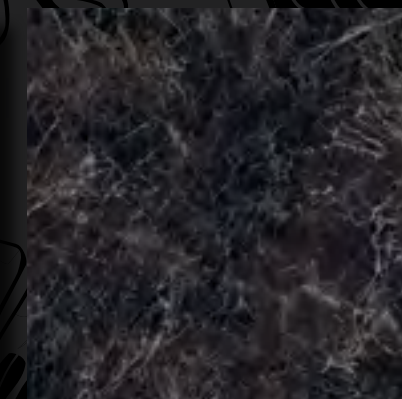


MARBLE BENCHTOP - **UPGRADE**

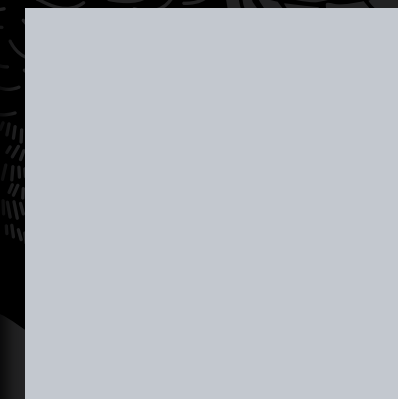
STANDARD INCLUSIONS



LIVING FLOOR TILE



SPLASHBACK TILE



KITCHEN JOINERY DULUX CASHMERE SEMI GLOSS



TIMBER FLOOR - **UPGRADE**



BATHROOM FLOOR TILE



BATHROOM WALL TILE



BATHROOM FEATURE WALL TILE



WALLPAPER - **UPGRADE**



“Nature is a huge inspiration for any designer. One only has to look outside to see that nature has already perfected the delicate balance of form and colour. Our job is to try and interpret that in the built environment.”

**RICHARD ARCHER
DESIGN PRINCIPAL,
ARCHER DESIGN**



SCHOOLS SNAPSHOT

There's no doubt that Lindfield sits in one of the most desirable school catchments, not just in Sydney, but Australia. From leading selective public schools, to prestigious private colleges, the North Shore is home to many of the country's best-known educational institutions – and thanks to the railway line, all are easily accessible.



IMAGE TOP LEFT: ROSEVILLE COLLEGE
 IMAGE TOP RIGHT: LINDFIELD PUBLIC SCHOOL
 IMAGE RIGHT AND LEFT: LINDFIELD LEARNING VILLAGE



PRIMARY

- Lindfield Public School**
218 Pacific Hwy, Lindfield NSW 2070
- Lindfield Learning Village**
100 Eton Rd, Lindfield NSW 2070
- Lindfield East Public School**
90 Tryon Rd, East Lindfield NSW 2070
- Killara Public School**
1 Ridgeland Ave, Killara NSW 2071
- Roseville Public School**
19A Archbold Rd, Roseville NSW 2069
- Highfields Preparatory**
18 Highfield Rd, Lindfield NSW 2070
- Holy Family Catholic Primary School**
2-4 Highfield Rd, Lindfield NSW 2070



SECONDARY

- Killara High School**
Koola Ave, Killara NSW 2071
- Ravenswood School**
Henry St, Gordon NSW 2072
- Roseville College**
27 Bancroft Ave, Roseville NSW 2069
- Pymble Ladies College**
Avon Rd, Pymble NSW 2073
- Knox**
2 Borambil St, Wahroonga NSW 2074
- Shore**
Blue St, North Sydney NSW 2060
- Chatswood High School**
24 Centennial Ave, Chatswood NSW 2067





INTRINSICALLY CONNECTED

Just a short walk from Lindfield railway station, as well as the Pacific Highway, A3 and M2, Carmine makes it easy to get around town - whatever direction you're travelling in. You can be in the CBD in under 15 minutes via train, and the major retail hubs of Chatswood and Macquarie Park are even closer.

You can also find all life's essentials within Lindfield itself - from schools and community facilities, to shopping precincts. Pick up your groceries, do your daily errands, grab a coffee and meet up with friends, all without leaving the suburb.

-
15 MINUTES TO SYDNEY CBD

11 MINUTES TO MACQUARIE CENTRE

6 MINUTES TO CHATSWOOD

15 MINUTES TO ROYAL NORTH SHORE HEALTH PRECINCT
-



LIFE'S ESSENTIALS

From friendly neighbourhood shops to major shopping centres and healthcare facilities, all essential amenities are within easy reach from Carmine. Your regular commute is short and sweet, whether you travel by train, car or bus. And on weekends, you never have to travel far to find inspiration, recreation or social connection.



LINDFIELD VILLAGE HUB

Currently in planning stages, the Lindfield Village Hub is one of the largest urban renewal projects undertaken by Ku-ring-gai Council in its 100-year history. It will see the west side of the suburb revitalised with green open spaces, a childcare centre, play areas, a library, community centre, and town square, as well as new dining and retail precincts with underground parking. Situated within easy walking distance of Carmine, Lindfield Hub will add vibrancy to the already dynamic and attractive local landscape. Considered to be a once-in-a-generation project, and with a focus on design excellence, the hub will be a great space for community members of all ages to enjoy for many years to come.



LINDFIELD GREEN

Also under development is the Lindfield Village Green: a conveniently located park near the railway station that will provide locals with a beautiful place to meet with friends, socialise or simply relax.



CULTURE & ENTERTAINMENT

With Lindfield as your starting point, you'll never be short of things to do. The Concourse in Chatswood has an ever-changing line-up of music, dance, drama and comedy - and you can also find HOYTS cinema, Timezone and Strike Bowling nearby. Roseville Cinema remains one of the North Shore's favourite independent picture theatres, and of course, there are countless sporting teams and clubs to choose from.

CHATSWOOD

Just a few minutes' drive or train ride away you'll find Chatswood: the biggest retail, business and entertainment precinct on the lower North Shore. From high-end designer fashion boutiques, to authentic street food markets, Chatswood is brimming with places to explore. It's also home to The Concourse, a major centre for arts, culture and entertainment.



TRUSLAN GROUP



Carmine is brought to you by Truslan Group: a leading integrated property platform based here in Sydney. Our group comprises of three specialist businesses: Truslan Estate, Truslan Constructions and Truslan Project Development & Management. This gives us a unique ability to unlock value in every project, delivering developments that are carefully tailored to our customers' needs.

As a group, we are united by a shared goal: to enhance the experience of occupants, and in turn create better communities. We keep this in mind at every stage of a development: from site selection through to design, build and final handover. This approach is very much evident at Carmine, where we've worked to create a place where residents can grow and prosper.

CHROFI



CHROFI is a Sydney-based architecture practice led by John Choi, Tai Ropiha and Steven Figuera. Over the past two decades, CHROFI has been responsible for many award-winning buildings, both in Australia and overseas. Working across residential, commercial, public and urban design sectors, CHROFI has delivered projects including the TKTS Times Square ticket booth in New York City, The Goods Line on Sydney Harbour, Lune de Sang in NSW Northern Rivers, The Harbord Diggers in Freshwater, and Mezzo Apartments in Glebe.

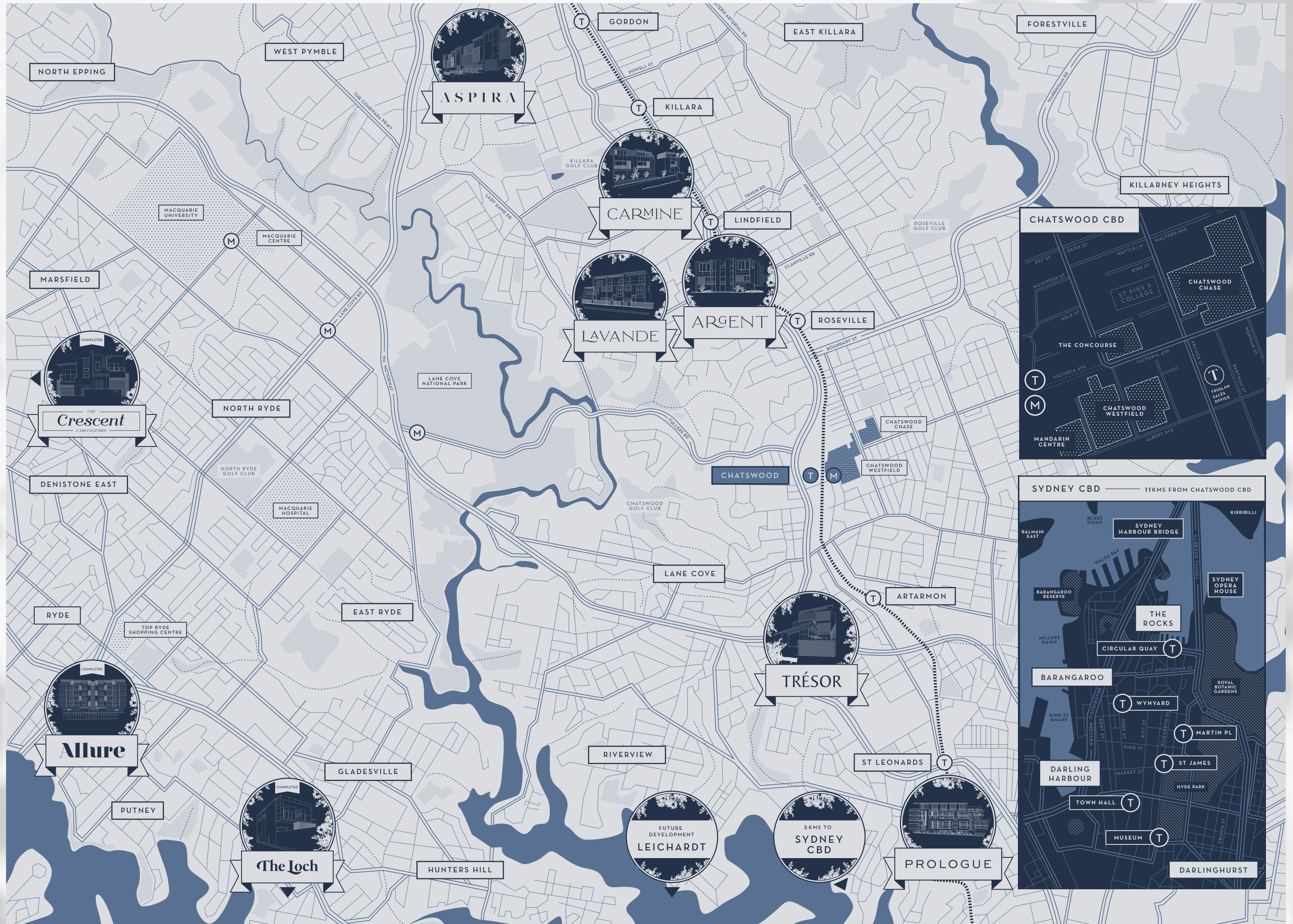
With their highly bespoke approach, CHROFI works across all scales, from individual homes to cities. At the heart of CHROFI's work is a commitment to the fertile ground that exists between people, architecture, and the world. At Carmine, this ethos is evident in the development's sensitive design, eminently liveable spaces, and harmonious integration into its surrounding community.

ARCHER DESIGN

Since it was first established in 1998, Archer Design has earned a reputation for producing outstanding architectural and interior design solutions, with a distinctive 'classic-modern' aesthetic. Working across multi-unit residential developments, corporate projects and high-end private residential commissions, Archer Design gives every project the individualised attention it deserves.

While Archer Design spaces are always thoughtfully tailored, there is a signature relaxed style that comes through in every one. Walk into a space designed by Archer Design, and you'll find a careful balance of seamless functionality and elegant aesthetics - an environment that makes life beautiful.





Renowned for producing quality builds across Sydney, Truslan is committed to unearthing a property's true potential. With an outstanding track record for transforming ordinary spaces into quality developments, Truslan invests time and energy into really getting to know the local community. Coupling this with meticulous planning, Truslan has been able to deliver several exclusive structures across Sydney that form foundations for their respective communities.





TRUSLAN
GROUP



HUIRONG
GROUP